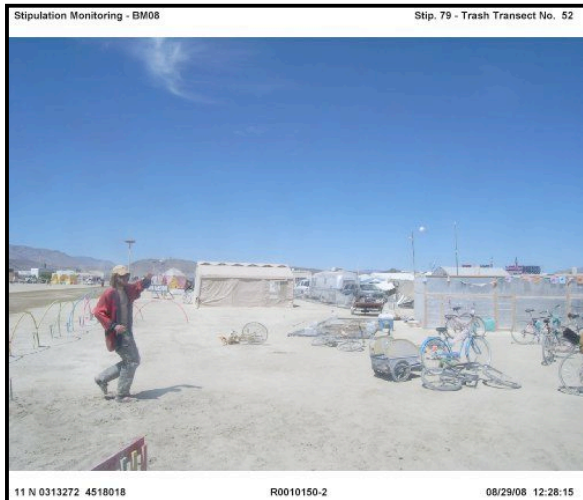


TRASH TRANSECTS 8



Monitoring is serious work but even monitoring can be fun. This devoted character put himself in every one of his trash transect photos to be sure the team lead was really reviewing EVERY photo shot for the project,

(Yes...I noticed!)

A. GOAL

During the event, the Team photographed each trash transect location on the chance that if an excessive amount of trash is found during later inspections, a record exists of that area's appearance in August.

B. STIPULATION

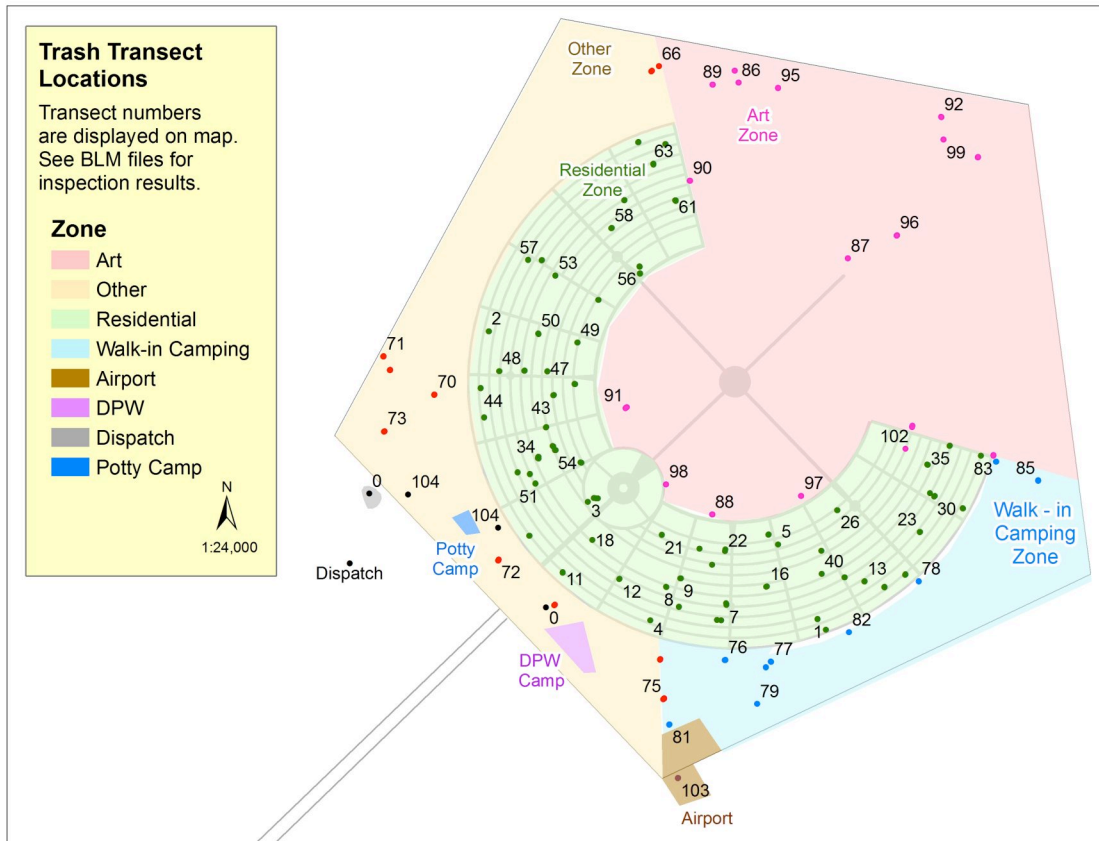
79. Inspections of the event site in the fall after the event, will be coordinated by BLM using randomly placed transects on the site and a measurable cleaning standard. The inspecting party will intensively collect debris found on the ground within each transect. A follow-up spring inspection will be conducted only when deemed necessary by BLM. Post-Event Cleanup Standard: The average total surface area of debris collected from either the fall or spring transects

C. METHODS

In ArcGIS, Hawth's tools were used to generate random points through 5 main zones in Black Rock City (Art, Residential, Walk-in Camping, Airport and Other) as shown on the map. During the event, the Team navigated to the approximate location plotted on the paper map. Upon arrival they shot 4 different photos, the first is facing towards the Man, and 3 others each rotated 90 degrees for a complete 360 view. The location of these photo points was recorded at the click of the shutter by the GPS camera. Single points were also generated for the Airport, ICP, DPW and Potty Camp locations for later inspections. It is these locations that will be used for later BLM inspections.

D. DATA

The map shows distribution of random transect points and zones.



E. RESULTS

Refer to BLM files for Fall 08 and Spring 09 inspection reports.

F. RECOMMENDATIONS

The current methods serve their purposes adequately.